



- From the CEO's Desk
- Stay At
- Airlines
- Interesting
- Adventure
- Recipe of the Month
- Destination
- Tourism Events
- Fairs and Festivals
- Impression

Five special time-lapse cameras have been installed for the first time in the Mount Everest region to monitor the melting of the glaciers. The cameras were installed recently by the technical team of an organisation -Extreme Ice Survey - a world-renowned American organisation.

### *From the CEO's Desk*

We are determined to provide you high standards of commitment towards Responsible Travel. We continue to work towards Responsible Tourism... [read more](#)

### *Stay at*

Located at the edge of Bardia National Park, Karnali Lodge is a very comfortable accommodation with excellent guides for exploring the wildlife of the park... [read more](#)

### *Airlines*

The Ministry of Tourism and Civil Aviation has permitted Oman Air to operate direct flights between Oman and Nepal. Oman Air is planning to launch... [read more](#)

### *Interesting*

The government has exempted visa fee for the Everest and Dhaulagiri Summiteers for 2010 and 2011. The mountaineering fee has also been reduced... [read more](#)

### *Adventure*

For those who are restricted by time or other considerations from going trekking, there are mountain flights that offer a panoramic encounter... [read more](#)

### *Recipe of the Month*

Peda is one of the famous desserts from Nepal. It is also one of the common dessert made during religious ceremonies. Peda is like mini cheese cake... [read more](#)

### *Destination*

The Royal Bardia National Park is the largest and most undisturbed wild area of the Terai region of Nepal's Himalayas. Similar to Chitwan Park... [read more](#)

### *Tourism Events*

Nepal Tourism Board in association with Nepal Airlines Corporation and eight travel trade companies participated at the Arabian Travel Market in Dubai... [read more](#)

### *Fair and Festivals*

This is the most colourful religious procession with cows and people out on the streets. Relatives of loved ones who passed away in that year... [read more](#)

### *Impression*

Excellent Experience. The Best Guide... [read more](#)



- From the CEO's Desk
- Stay At
- Airlines
- Interesting
- Adventure
- Recipe of the Month
- Destination
- Tourism Events
- Fairs and Festivals
- Impression



## From the CEO's Desk



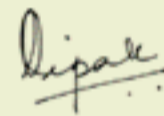
Dear Partners,

We are determined to provide you high standards of commitment towards Responsible Travel. We continue to work towards Responsible Tourism by integrating it in our core activities so that you are able to gain from it as well.

My team and I look forward to seeing you in Kathmandu or any other part of Nepal where you will experience instants that endure and leave a lasting positive impression.

Come explore with us.

Regards,



Dipak Deva



- From the CEO's Desk
- Stay At
- Airlines
- Interesting
- Adventure
- Recipe of the Month
- Destination
- Tourism Events
- Fairs and Festivals
- Impression



## Stay at Tiger Tops Karnali Lodge

Located at the edge of Bardia National Park, Karnali Lodge is a very comfortable accommodation with excellent guides for exploring the wildlife of the park.

The lodge has 24 rooms built in a traditional Tharu longhouse style, featuring mud-walls and thatched roofs outside and high ceiling and comfortable beds shrouded by mosquito nets inside. The lodge has its own generator to provide electricity and hot water is available around the clock.

A central thatched-roofed roundhouse houses the restaurant and bar, with a campfire lit in the evening and early morning. On clear days, breakfast and lunch are served outside. The level of service provided is exceptional.

Many of the guides employed by the lodge are from the local Tharu community and passionate about the wildlife and culture of the region. The lodge has excellent relations with the neighbouring villages. A village visit is a great way of learning about life in this remote part of Nepal.

The lodge also operates the Tiger Tops Karnali Tented Camp within the National Park.



- From the CEO's Desk
- Stay At
- Airlines
- Interesting
- Adventure
- Recipe of the Month
- Destination
- Tourism Events
- Fairs and Festivals
- Impression



## Airlines



### *Oman Air to fly to Nepal*

The Ministry of Tourism and Civil Aviation has permitted Oman Air to operate direct flights between Oman and Nepal. Oman Air is planning to launch Oman-Kathmandu flights from the third week of June 2010. It plans to operate seven flights a week. An agreement to this effect was recently signed between the Governments of the two countries in Kathmandu. According to the Ministry of Tourism and Civil Aviation, the direct air services will help the Nepal Tourism Year 2011.



- From the CEO's Desk
- Stay At
- Airlines
- Interesting
- Adventure
- Recipe of the Month
- Destination
- Tourism Events
- Fairs and Festivals
- Impression

## Interesting



### *Govt exempts visa fee for mountaineers*

The government has exempted visa fee for the Everest and Dhaulagiri Summiters for 2010 and 2011. The mountaineering fee has also been reduced by 50 per cent for Dhaulagiri climbers during the two years, This Spring Season, MoTCA has already issued permits to 80 Expedition Teams for climbing various higher peaks including Mt Everest and still few more teams are in the pipeline. Similarly, NMA has already issued permits to 358 climbing teams to scale 33 Peaks of NMA and many more teams are expected to arrive before the monsoon in June. In the year 2009, NMA had issued permit to 1210 climbing teams.

### *Cameras to monitor melting Everest*

Five special time-lapse cameras have been installed for the first time in the Mount Everest region to monitor the melting of the glaciers. The cameras were installed recently by the technical team of an organisation -Extreme Ice Survey - a world-renowned American organisation.

Cameras in the Everest region were installed to provide ground information on the melting of the Himalayas that had become a controversial issue after an error in the key document of the Inter-governmental Panel on Climate Change - a scientific body to look into climate change issues. IPCC recently admitted data mistake in its report published in 2007 about the disappearance of all the glaciers in the Himalayas by 2035.

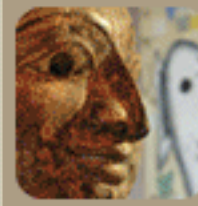
The cameras powered by the solar panels and batteries were mounted on vertical rock faces. The captured photos are automatically stored in the cameras and the technicians will check the cameras and download them for analysis every six months. The compiled and analysed imagery will be disseminated across the world to silence the climate change sceptics.

### *Cho Oyu is youngest Everest's next stop*

The 13-year-old American boy, who became the youngest person to climb Mount Everest, announced plans to climb Mount Cho Oyu, the world's sixth highest peak, later this year.

Jordan Romero from California, plans to climb the 8,201-metre peak during the autumn climbing season. Cho Oyu straddles the Nepal-China border. Nepal prohibits people under the age of 16 from climbing high mountain peaks, but there is no such restriction in China. Romero scaled the 8,850-metre Mount Everest recently from the northern side of the peak in China.

He encourages people to climb Everest and especially younger children just to go big



- 
- From the CEO's Desk
  - Stay At
  - Airlines
  - Interesting
  - Adventure
  - Recipe of the Month
  - Destination
  - Tourism Events
  - Fairs and Festivals
  - Impression



## Adventure



### Mountain flight

#### Airplane

For those who are restricted by time or other considerations from going trekking, there are mountain flights that offer a panoramic encounter with the highest peaks on earth. The plane departs from Kathmandu and flies alongside the Himalaya to give you an eye-level view of the snow peaks. You return after an hour. Cruising close to the massifs of rock and ice, the flight presents a mesmerising sight.

#### Helicopter

In Nepal, going to remote corners of the Himalaya by helicopter is guaranteed to be an exciting activity. Since the whirlybird needs only a small landing space, it can be hired to take tourists to whichever destination and at whatever time they want to go. Of course, amazing mountain views are just one part of the ride.



- From the CEO's Desk
- Stay At
- Airlines
- Interesting
- Adventure
- Recipe of the Month
- Destination
- Tourism Events
- Fairs and Festivals
- Impression



## Recipe of the Month



### PEDA

#### INGREDIENTS

- 3 cups whole milk
- 1 cup half and half
- 4 tablespoon sugar
- 1 teaspoon butter
- 12 Pistachio nuts (sliced)
- 1 teaspoon lemon juice
- ½ teaspoon cardamom powder

#### PREPARATION

- Boil milk and half & half with few drops of lemon juice.
- Milk should separate into solid chunk and liquid. Set aside solid chunk.
- Melt the ghee in a pan and add the milk solid chunk to it.
- Add sugar and cardamom powder while stir continuously on a low heat.
- Beat the mixture well and remove from fire. Allow it to cool.
- Make equal portions of the mixture, make ball shape and flatten slightly. Place on a greased tray.
- Finally decorate the "Peda" by pressing sliced pistachio on it.



- From the CEO's Desk
- Stay At
- Airlines
- Interesting
- Adventure
- Recipe of the Month
- Destination
- Tourism Events
- Fairs and Festivals
- Impression

## Destination



### *Royal Bardia National Park*

The Royal Bardia National Park is the largest and most undisturbed wild area of the Terai region of Nepal's Himalayas. Similar to Chitwan Park but with a drier climate and a more remote location, Bardia encompasses 1,000-sq-kms of riverine grassland and sal forests.

The Terai or lowland hills and valleys of southern Nepal extend all along the Indian border. The Terai once supported a healthy wildlife population in a habitat of 25-foot high elephant grass and dense hardwood forests, but had very few people due to virulent malarial mosquitoes.

Bardia was a royal hunting reserve of Nepal's Rana rulers from 1846 to 1950. In Nepal, wildlife lost whatever protection the royal hunting reserve provided when the Rana rule ended in the 1950's. A well-meaning malaria eradication program in the 1950's and 1960's opened the Terai for settlement, and transformed about 75% of the native Terai to agricultural land. Wildlife population declined with the combination of increased settlement and widespread poaching. Bardia was declared a wildlife reserve in 1976, first measuring 134 sq miles, thereafter expanding in 1985 to 374 sq miles.



- From the CEO's Desk
- Stay At
- Airlines
- Interesting
- Adventure
- Recipe of the Month
- Destination
- Tourism Events
- Fairs and Festivals
- Impression



## Tourism Events



### *Nepal at Arabian Travel Market, Dubai-2010*

Nepal Tourism Board in association with Nepal Airlines Corporation and eight travel trade companies participated at the Arabian Travel Market in Dubai from 4-7 May 2010. The fair was inaugurated by HH Sheikh Maktoum bin Mohammed bin Rashid Al Maktoum, Deputy Ruler of Dubai. Adventure and cultural products of Nepal seemed to be quite popular among the visitors. 'Nepal Tourism Year 2011' also received much attention from the visitors as well as the media.



- From the CEO's Desk
- Stay At
- Airlines
- Interesting
- Adventure
- Recipe of the Month
- Destination
- Tourism Events
- Fairs and Festivals
- Impression



## Fairs and Festival



### *Festival Of The Month*

#### **Janai Purnima and Gai Jatra (24th August):**

This is the most colourful religious procession with cows and people out on the streets. Relatives of loved ones who passed away in that year send religious groups to join the procession. The cow is holy to Hindus. She represents Laxmi, the goddess of wealth, and guides the souls of the departed to the gates of the Netherworld. But Gai jatra is not a sombre occasion. Satire, jokes, fancy costumes, and colourful processions are the order of the day as people recall how an eighteen-century king rallied his people to cheer his queen upon the death of their son. Those who have experienced the death of close ones during the past year share their sorrow and take comfort in the fact that the Gai (cow) has safely transported the departed souls on their afterlife journey. Young men wearing women's saris, children dressed up as cows, and whimsical characters of all sorts fill the streets.

#### **Shree Krishna Janmastami (25th August):**

Hindus observe this holiday by remaining awake the whole night performing religious dances and singing in praise of Lord Krishna.



- From the CEO's Desk
- Stay At
- Airlines
- Interesting
- Adventure
- Recipe of the Month
- Destination
- Tourism Events
- Fairs and Festivals
- Impression



## Impression



## Excellent Service

Dear Sir,

Excellent Experience. The Best Guide.

Regards,

Roberto Oribe.